



**BENJAMIN  
STEVENS.**  
estate agents



**Hartsbourne Road, Bushey WD23 1PZ**

**Asking Price £850,000**

A beautifully presented bright and spacious TWO DOUBLE BEDROOM, TWO BATHROOM THIRD FLOOR APARTMENT WITH PRIVATE TERRACE forming part of this exclusive purpose built block on one of Bushey Heath's most sought after residential roads, conveniently located and within walking distance to all local shopping and transport facilities. The property is being offered in excellent decorative order and benefits from: Security Entryphone System, Lift Access, Gas Fired Central Heating & Underfloor Heating, Spacious Entrance Hall, Reception Room With Bi-Fold Doors Leading To Private Terrace, Fully Fitted Kitchen/Breakfast Room, Bedroom One With En Suite Shower Room & Walk In Wardrobe., Bedroom Two, Family Bathroom, Communal Grounds, Allocated Parking For Two Cars.  
**CHAIN FREE**



# Hartsbourne Road, Bushey WD23 1PZ

Exterior:



Reception Room:



Communal Entrance Hall:



Reception Room:



Entrance Hall:



Reception Room:





# Hartsbourne Road, Bushey WD23 1PZ

Reception Room:



Kitchen/Breakfast Room:



Kitchen/Breakfast Room:



Bedroom One:



Kitchen/Breakfast Room:



Bedroom One:





# Hartsbourne Road, Bushey WD23 1PZ

**En Suite Shower Room:**



**Private Terrace:**



**Bedroom Two:**



**Terrace View:**



**Family Bathroom:**

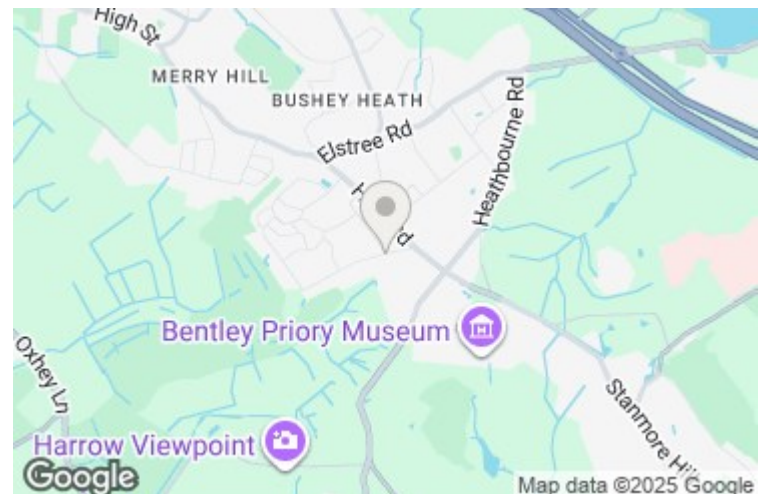


**Tenure:**

This property is share of the freehold  
Lease: Approximately 991 years remaining.  
Service Charge: Approximately £4,500 per year.  
Council Tax Band: G £3,815

**Disclaimer:**

While every care and effort has been made to ensure these details are correct their accuracy cannot be guaranteed and so should not form part of any contract.



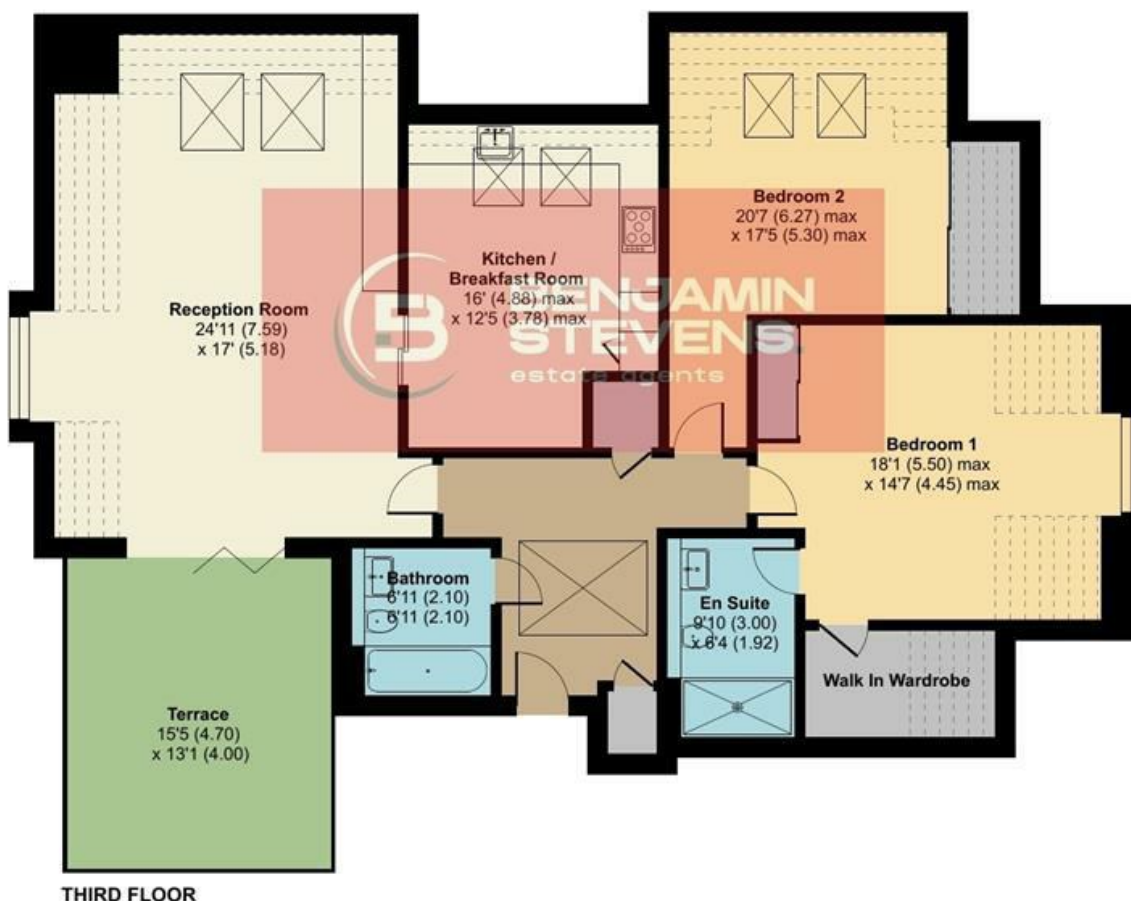
# Hartsbourne Road, Bushey, WD23



Approximate Area = 1195 sq ft / 111 sq m  
 Limited Use Area(s) = 293 sq ft / 27.2 sq m  
 Total = 1488 sq ft / 138.2 sq m

For identification only - Not to scale

Denotes restricted  
head height



Floor plan produced in accordance with RICS Property Measurement 2nd Edition, Incorporating International Property Measurement Standards (IPMS2 Residential). Produced for Benjamin Stevens. REF: 1393632. © richcom 2025.

